

# USE CASE

# DISRUPTIVE GUEST

## Safe Hospitality

### Operational View



#### DETECT

##### DISRUPTIVE GUEST REPORTED

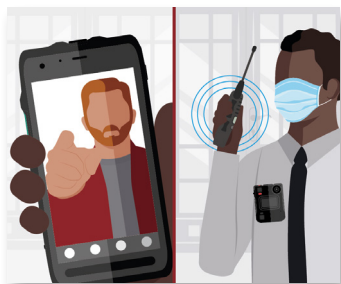
A staff member interacts with a disruptive individual and activates their body-worn camera to begin recording. An alert is automatically sent to appropriate staff directly on their device of choice and in the command center.



#### ANALYZE

##### SITUATIONAL INTELLIGENCE GATHERED

Security teams in the command center populate nearby cameras, including the body-worn camera and evaluate the situation to determine appropriate response.



#### COMMUNICATE

##### SECURITY STAFF ENGAGED

Security teams are dispatched to the situation and receive intelligence including an image of the disruptive guest prior to their arrival on scene.



#### RESPOND

##### SITUATION CONTAINED AND MITIGATED

Security confronts the individual to escort them off the premises. An incident report is securely documented with all relevant information and shared seamlessly with other nearby facilities.

### Technology View



#### DETECT

- Body-Worn Cameras
- Orchestrate



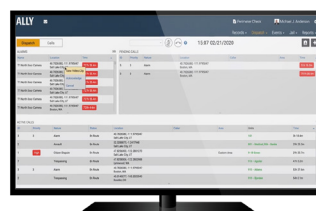
#### ANALYZE

- Fixed Video Security
- CommandCentral Aware Enterprise
- Body-Worn Cameras



#### COMMUNICATE

- MOTOTRBO ION/Two-Way Radio Communications
- WAVE PTX: Multimedia Sharing & Broadband Push-to-Talk
- Avtec Dispatch Console



#### RESPOND

- Body-Worn Cameras
- Allly Incident Management



\*Camera footage is for illustrative purposes only

Motorola Solutions, Inc. 500 West Monroe Street, Chicago, IL 60661 U.S.A. [motorolasolutions.com](http://motorolasolutions.com)

MOTOROLA, MOTO, MOTOROLA SOLUTIONS and the Stylized M Logo are trademarks or registered trademarks of Motorola Trademark Holdings, LLC and are used under license. All other trademarks are the property of their respective owners. © 2021 Motorola Solutions, Inc. All rights reserved. 12-2021 [LD05]