

# USE CASE

# OFF-HOURS PRESENCE DETECTION

## Safe Hospitals

### Operational View



#### DETECT

##### PRESENCE DETECTED DURING OFF HOURS

The presence of an individual is detected in a sensitive area during off-hours. An alert is automatically sent to appropriate staff on the device of their choice and to the command center.



#### ANALYZE

##### SITUATIONAL AWARENESS GATHERED

In the command center, nearby cameras are populated and closest response resources are determined using GPS location data.



#### COMMUNICATE

##### RESOURCES DISPATCHED

Appropriate individuals are dispatched to the area with image of the intruder and other multimedia intelligence.



#### RESPOND

##### SITUATION RESOLVED

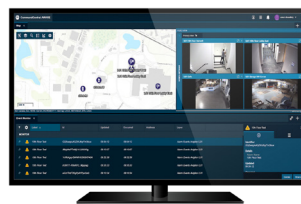
Security teams remove the intruder and secure the area and an incident is logged with pre-populated fields.

### Technology View



#### DETECT

- Avigilon Control Center
- Fixed Video Security
- Orchestrate



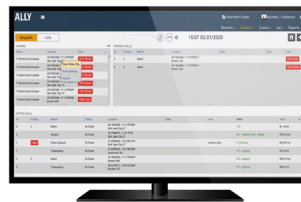
#### ANALYZE

- Avigilon Control Center
- CommandCentral Aware Enterprise



#### COMMUNICATE

- Radio Communications: Voice & Multimedia
- WAVE PTX: Multimedia Sharing & Broadband Push-to-Talk
- Avtec Dispatch Console



#### RESPOND

- Ally Incident Management



\*Camera footage is for illustrative purposes only

Motorola Solutions, Inc. 500 West Monroe Street, Chicago, IL 60661 U.S.A. [motorolasolutions.com](http://motorolasolutions.com)

MOTOROLA, MOTO, MOTOROLA SOLUTIONS and the Stylized M Logo are trademarks or registered trademarks of Motorola Trademark Holdings, LLC and are used under license. All other trademarks are the property of their respective owners. © 2021 Motorola Solutions, Inc. All rights reserved. 12-2021 [LD02]